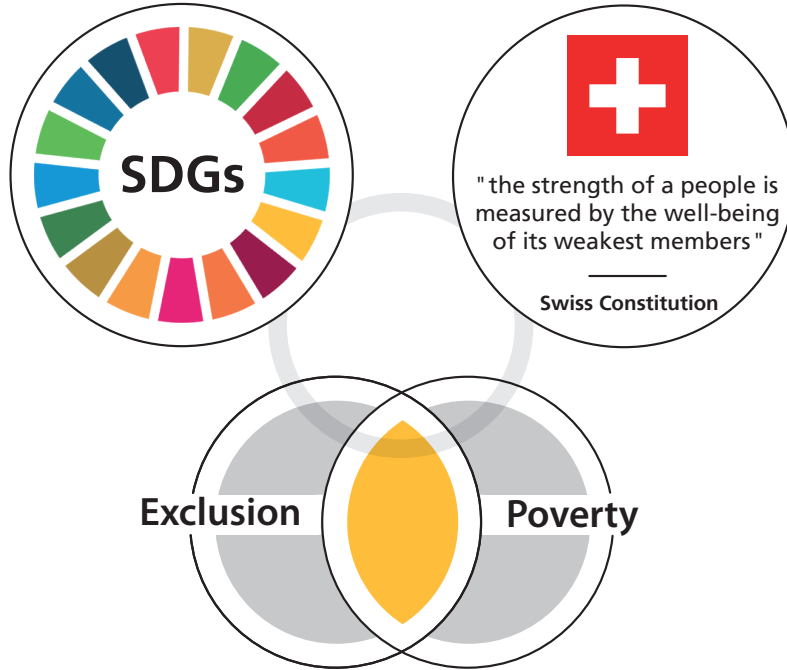




## In a nutshell: SDC Guidance

# Leave **No One** Behind



Significant progress has been made on many of the targets of the Millennium Development Goals (MDG). Nevertheless, development success has left millions of people behind.

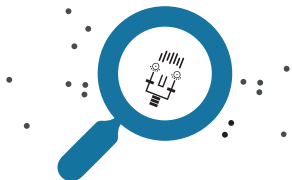
Switzerland has adopted the 2030 Agenda, and the Swiss Agency for Development and Cooperation (SDC) is incorporating these pledges into its work.

The 2030 Agenda for Sustainable Development pledges to leave no one behind and to endeavor to reach the furthest behind first.

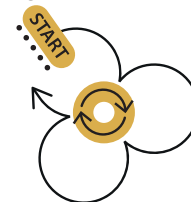
Poverty combined with exclusion are the defining conditions of those left behind.

### The SDC is committed to:

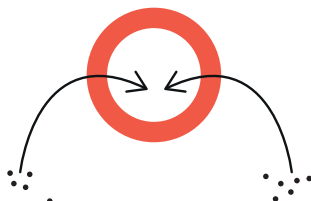
**1** Focusing on people living in poverty, giving special consideration to the poorest of the poor, and recognizing the multiple dimensions of poverty



**3** Ensuring that populations left behind or at risk of being left behind are considered in all new SDC cooperation and thematic strategies



**2** Aiming for transformative change by tackling exclusion, discrimination and inequality



**4** Enhancing information systems and the production of disaggregated data that reveal the challenges of those left behind and strengthen the relationship between duty bearers and rights holders



# Anchoring

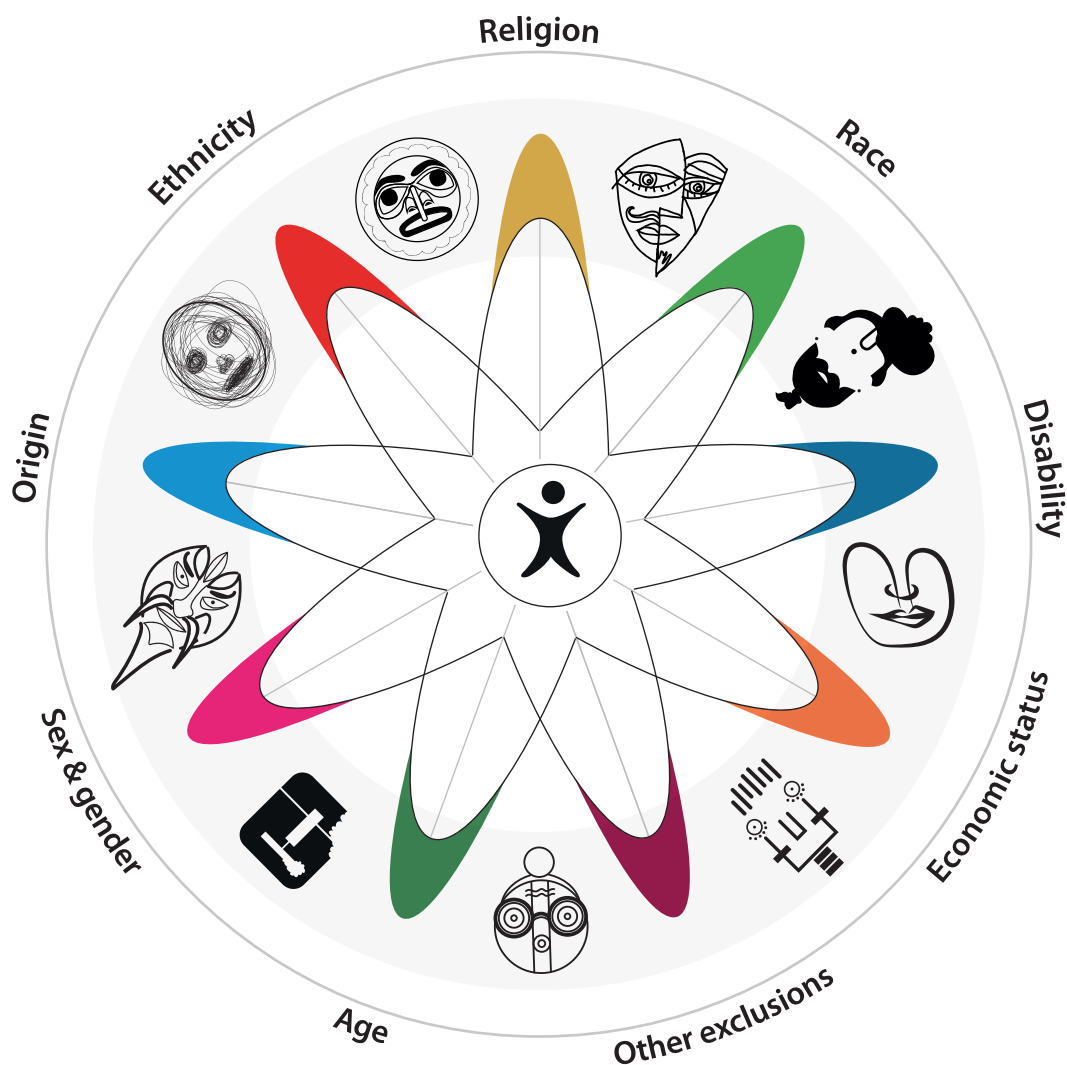
The SDC anchors *leave no one behind* in all its strategic documents and programmes and strives to introduce it in the strategies of its partners including multilateral organisations.

- The SDC systematically integrates *leave no one behind* in its results based programme management starting with a thorough analysis to understand the exclusions mechanisms - WHO? FROM

WHAT? WHY? BY WHOM? - on the basis of disaggregated data and including the perspective of the poor and excluded.

- SDC makes informed choices, sets priorities and selects one or two explicit target groups.
- The Theory of change explains the way to expected results.
- Progress is systematically monitored and evaluated for learning and appropriate steering.

## Drivers of exclusion and poverty



## Integration into programmes Mainstreaming

The SDC integrates these commitments into its programmes by:

- Identifying groups left behind or at risk of being left behind
- Understanding the drivers of exclusion
- Making a thorough examination of how an intervention affects the most excluded

## Specific programmes Targeting

Wherever mainstreaming alone is unlikely to achieve transformational change, the SDC:

- Designs interventions that specifically target the groups left behind on the basis of their specific needs
- Acts to address gender-specific exclusion
- Takes a long-term view of the transformative change