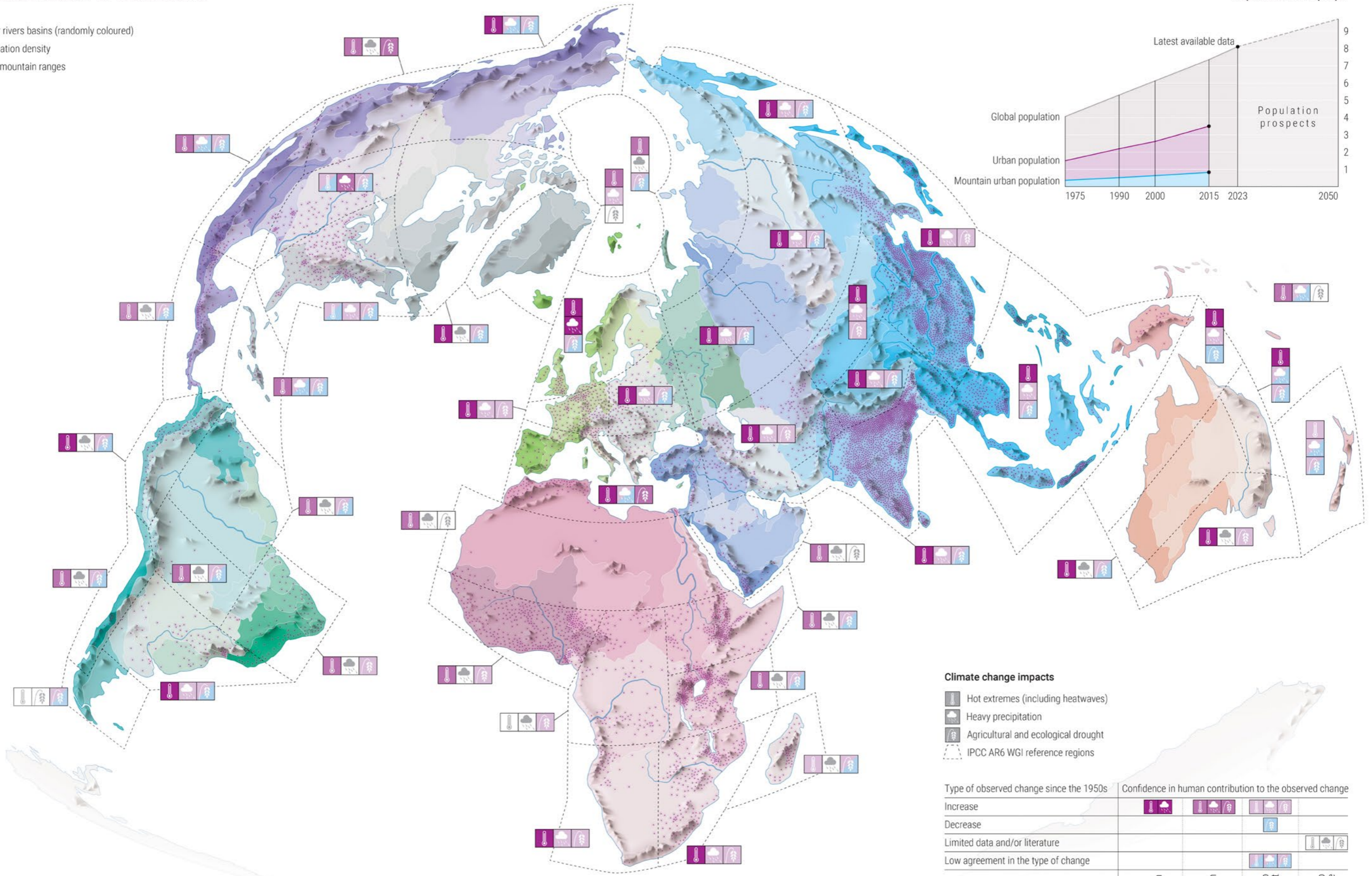


Mountains in Motion

Global Linkages from Ridge to River

The global reach of mountains

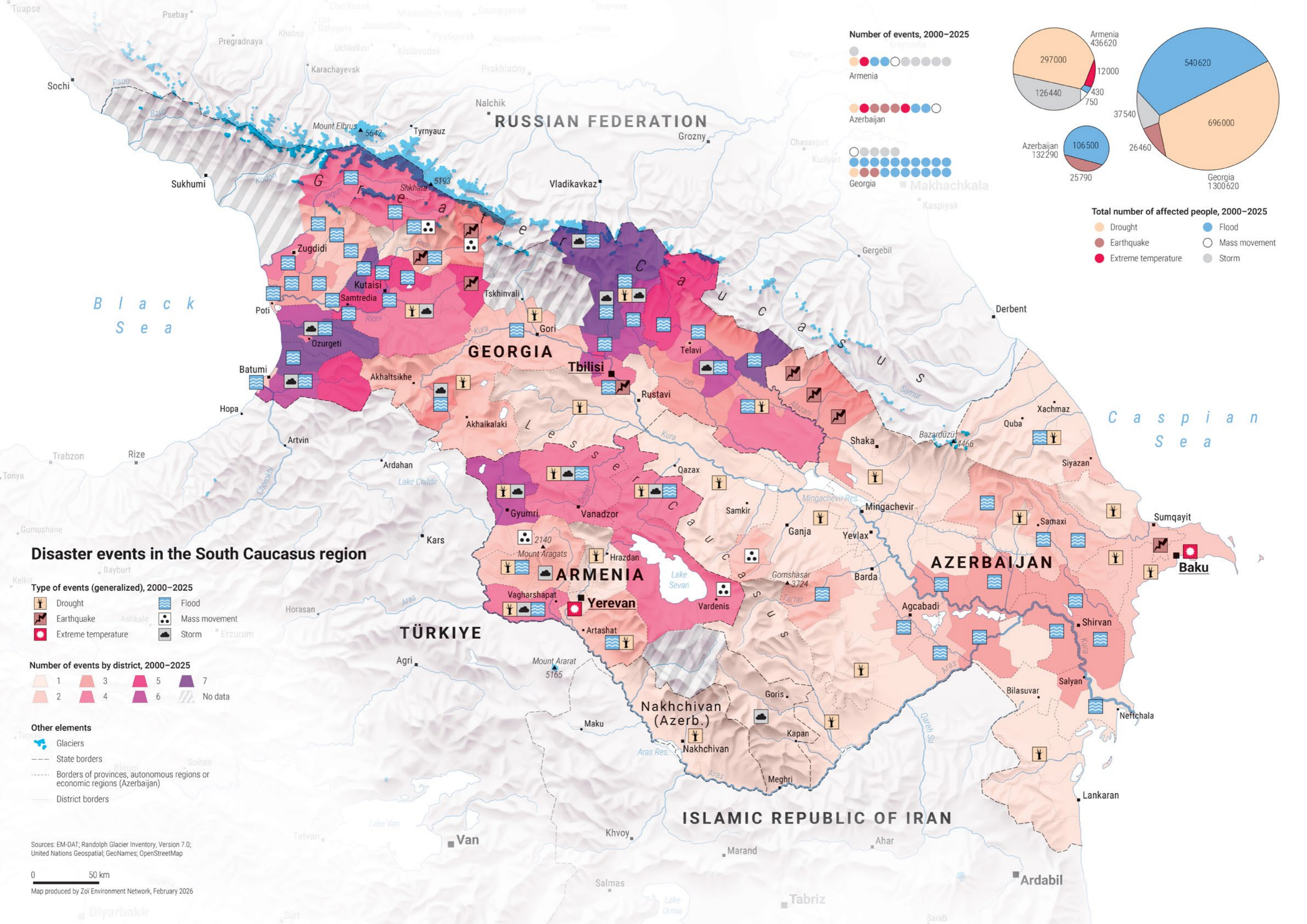
- Major rivers basins (randomly coloured)
- Population density
- Main mountain ranges



Climate change impacts

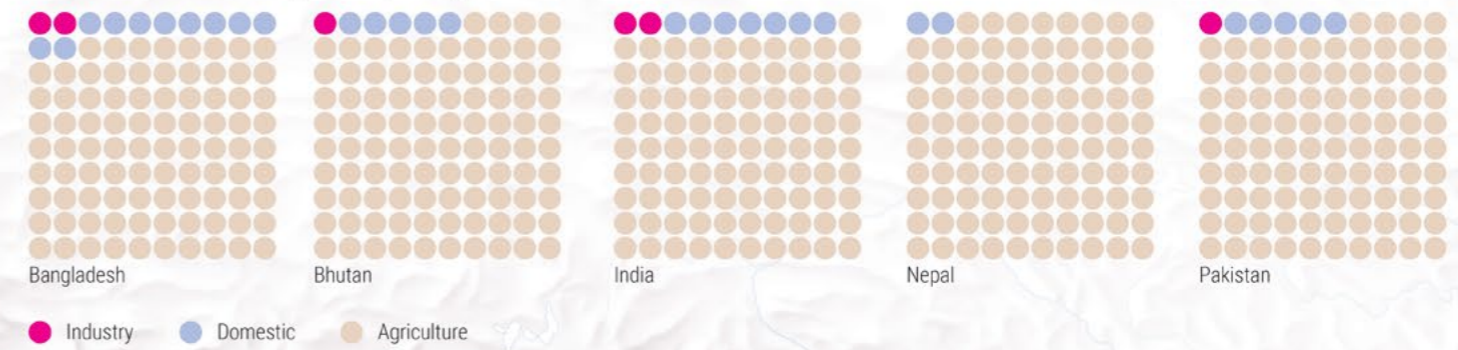
- Hot extremes (including heatwaves)
- Heavy precipitation
- Agricultural and ecological drought
- IPCC AR6 WGI reference regions

Type of observed change since the 1950s	Confidence in human contribution to the observed change			
Increase	High	Medium	Low due to limited agreement	Low due to limited evidence
Decrease				
Limited data and/or literature				
Low agreement in the type of change				
	High	Medium	Low due to limited agreement	Low due to limited evidence

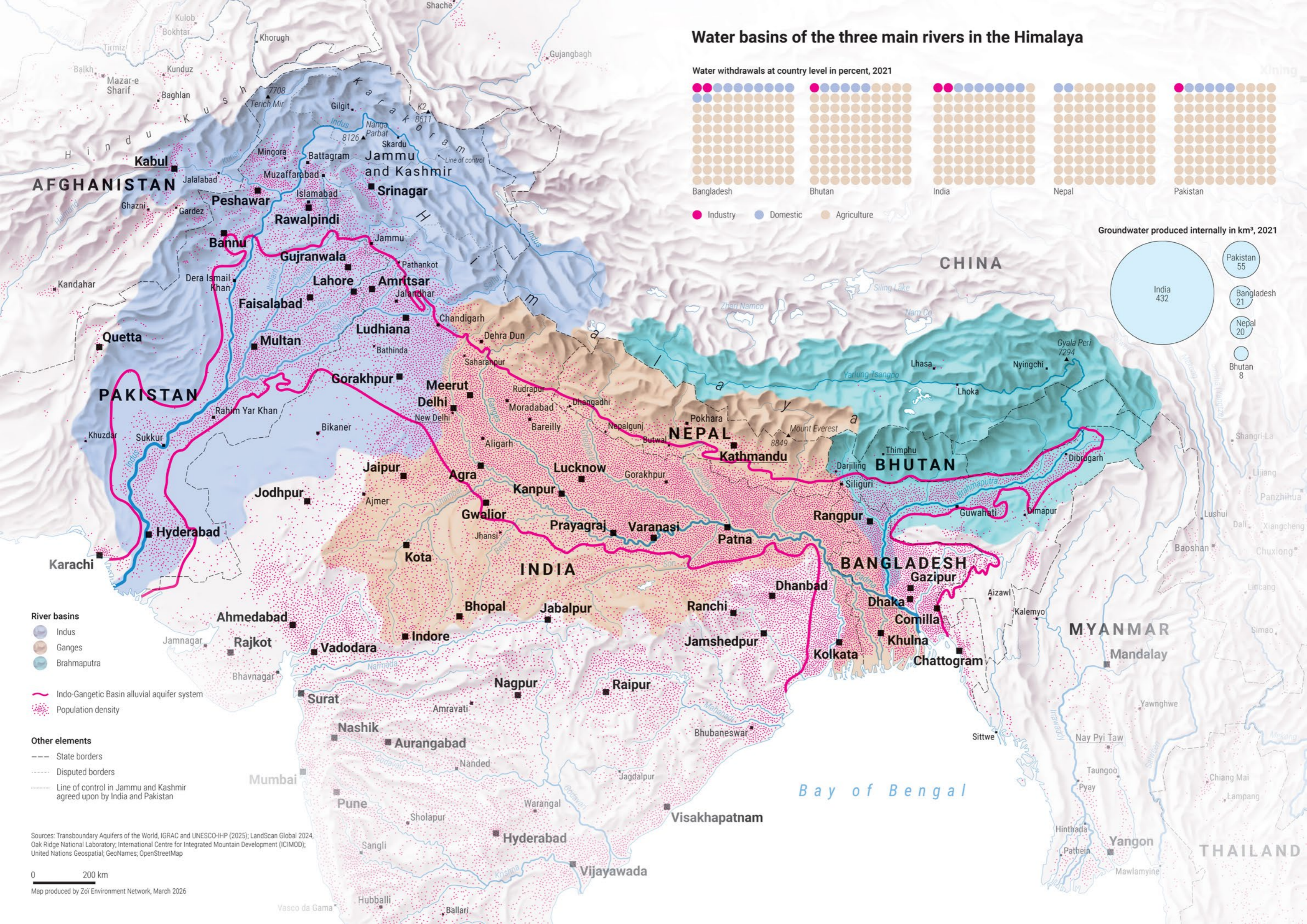
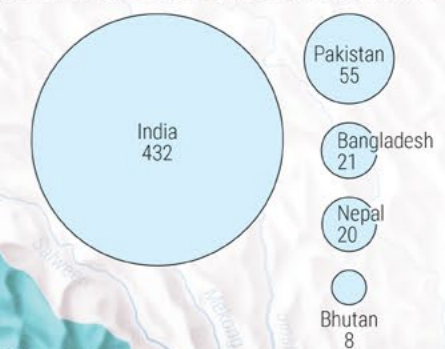


Water basins of the three main rivers in the Himalaya

Water withdrawals at country level in percent, 2021

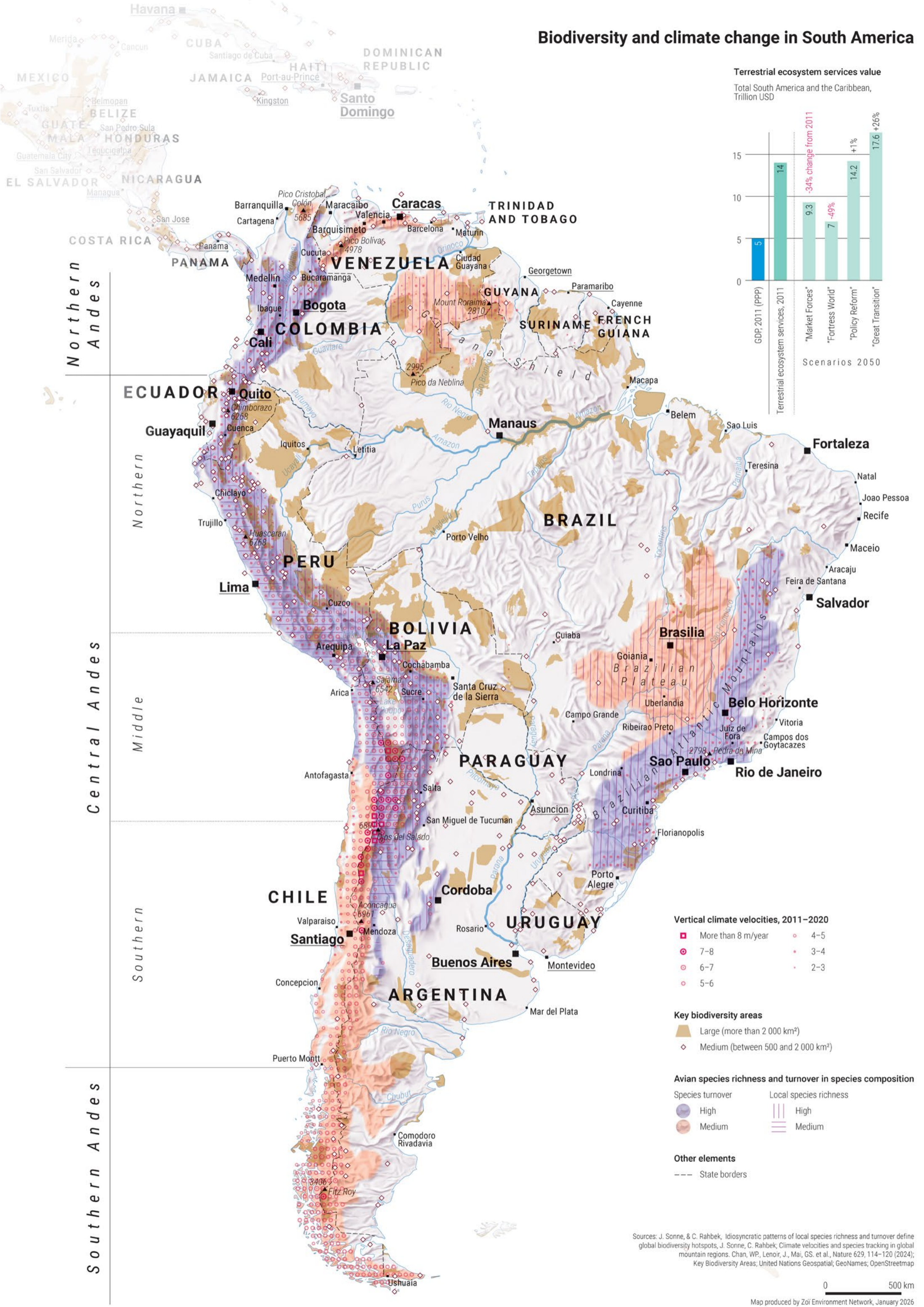


Groundwater produced internally in km³, 2021



Sources: Transboundary Aquifers of the World, IGRAC and UNESCO-IHP (2025); LandScan Global 2024, Oak Ridge National Laboratory; International Centre for Integrated Mountain Development (ICIMOD); United Nations Geospatial; GeoNames; OpenStreetMap

Biodiversity and climate change in South America



Terrestrial ecosystem services value

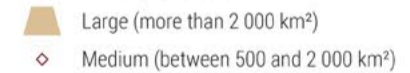
Total South America and the Caribbean, Trillion USD



Vertical climate velocities, 2011–2020



Key biodiversity areas



Avian species richness and turnover in species composition



Other elements

--- State borders

Sources: J. Sonne, & C. Rahbek, Idiosyncratic patterns of local species richness and turnover define global biodiversity hotspots, J. Sonne, C. Rahbek, Climate velocities and species tracking in global mountain regions. Chan, WP, Lenoir, J., Mai, GS, et al., Nature 629, 114–120 (2024); Key Biodiversity Areas; United Nations Geospatial; GeoNames; OpenStreetmap

0 500 km

Map produced by Zoi Environment Network, January 2026

Air quality in Central Asia

PM_{2.5} concentration, µg/m³, 2019

Modelled 20 50 100 200

Ground data

Arid areas Semi-arid areas

Major wind circulation in January

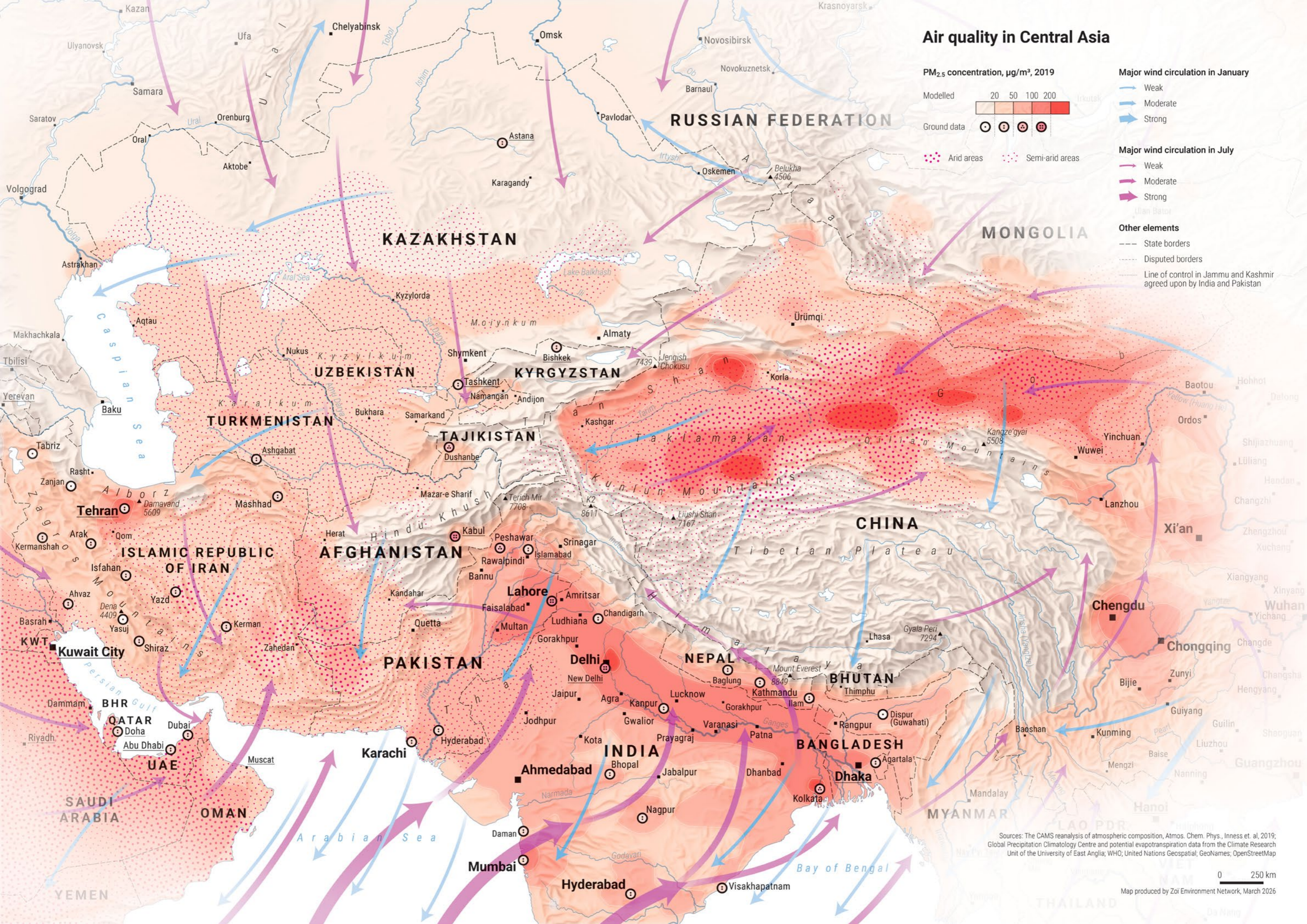
Weak Moderate Strong

Major wind circulation in July

Weak Moderate Strong

Other elements

--- State borders
 - - - Disputed borders
 Line of control in Jammu and Kashmir agreed upon by India and Pakistan



Sources: The CAMS reanalysis of atmospheric composition, Atmos. Chem. Phys., Inness et. al, 2019; Global Precipitation Climatology Centre and potential evapotranspiration data from the Climate Research Unit of the University of East Anglia; WHO; United Nations Geospatial; GeoNames; OpenStreetMap

0 250 km

Map produced by Zoi Environment Network, March 2026

Land degradation in East Africa

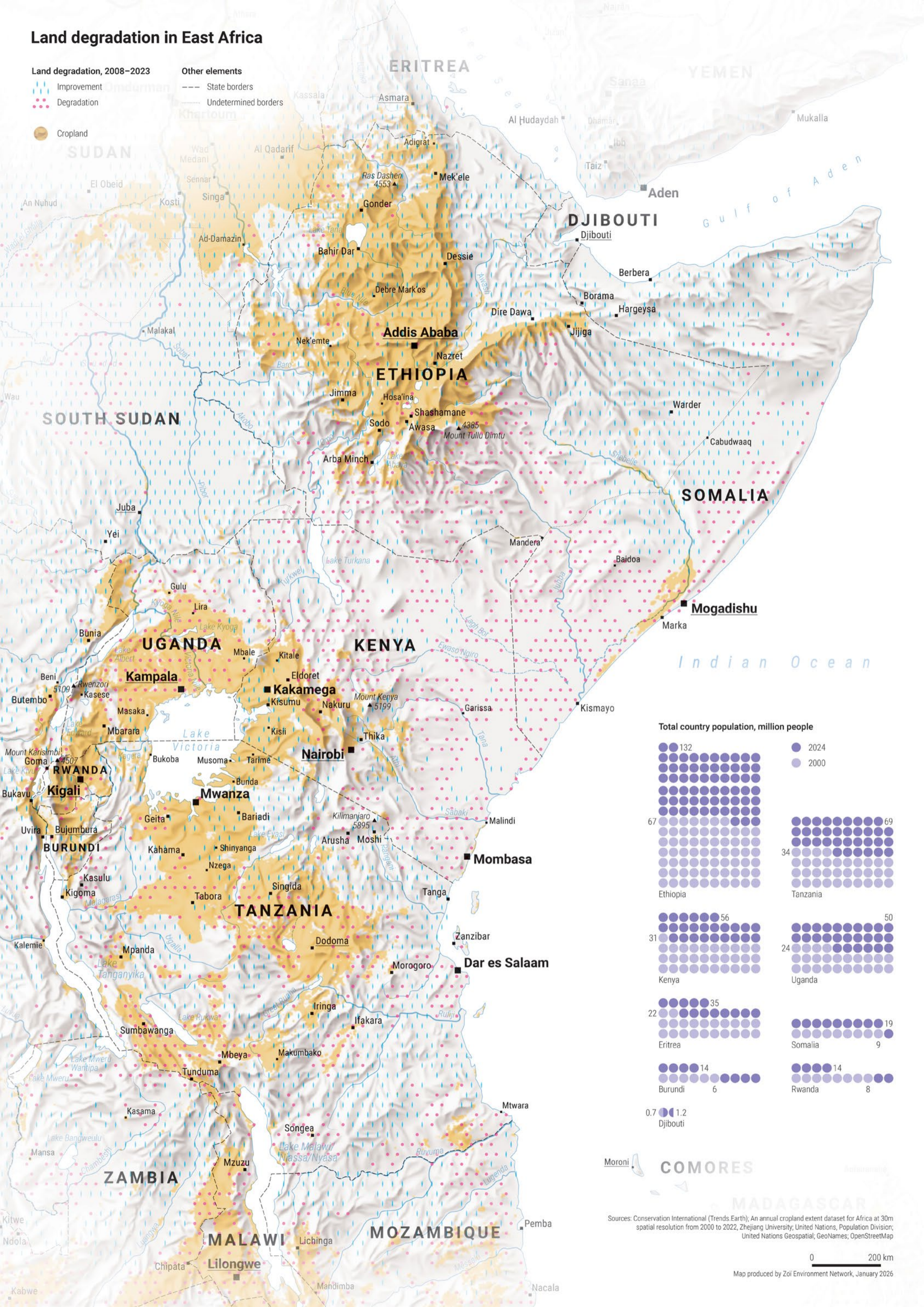
Land degradation, 2008–2023

- Improvement
- Degradation

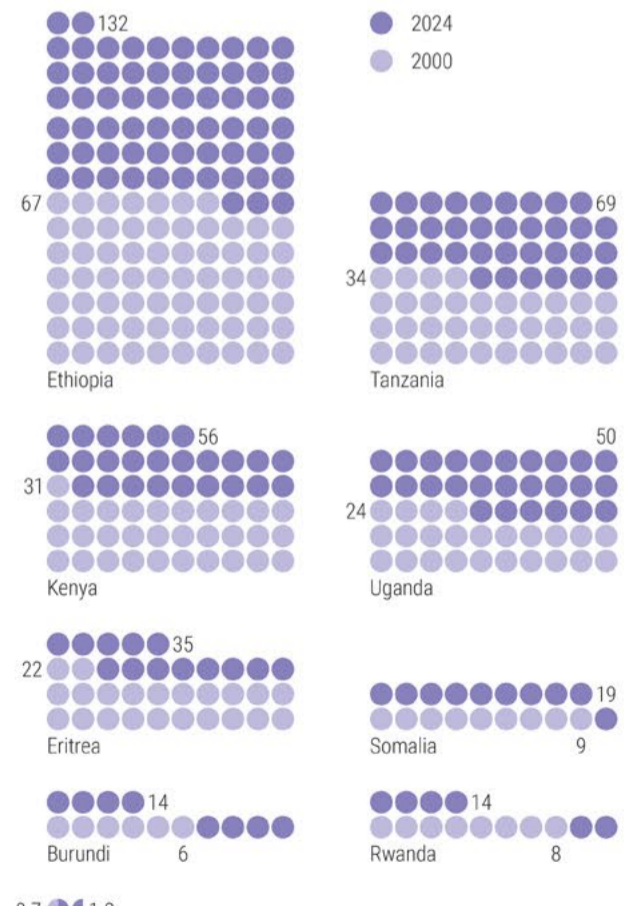
Other elements

- State borders
- Undetermined borders

Cropland



Total country population, million people



Moroni
COMORES
MADAGASCAR

Sources: Conservation International (Trends Earth); An annual cropland extent dataset for Africa at 30m spatial resolution from 2000 to 2022, Zhejiang University, United Nations, Population Division; United Nations Geospatial; GeoNames; OpenStreetMap

0 200 km

Map produced by Zoi Environment Network, January 2026

This publication is supported by the Environment Fund - UNEP's core financial fund. The Fund is used to provide scientific evidence on the state of the global environment, identify emerging environmental issues and innovative solutions, raise awareness and advocacy, bring together stakeholders to agree on action, and for building capacity of partners. Core funding gives UNEP the strength and flexibility to implement the programme of work (in support of the 2030 Agenda) as approved by its Member States, and to strategically respond to emerging challenges. UNEP is grateful to all the Member States that contribute to the Environment Fund.

For more information: unep.org/environment-fund

