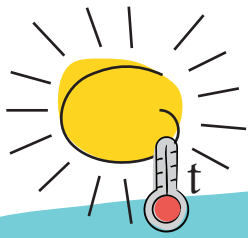
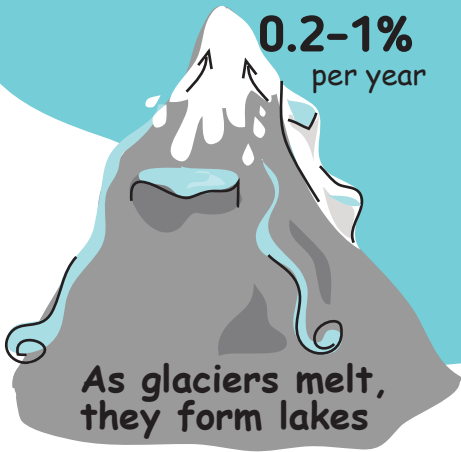


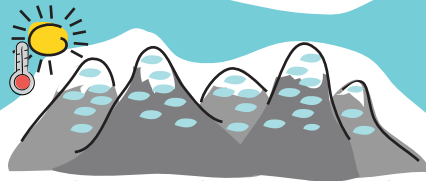
Reducing glacial lake hazards in Central Asia



Glacier loss rate
0.2-1%
per year



More than 1 000
dangerous lakes today



The number of and
risk from glacial lakes
is growing due to
climate change

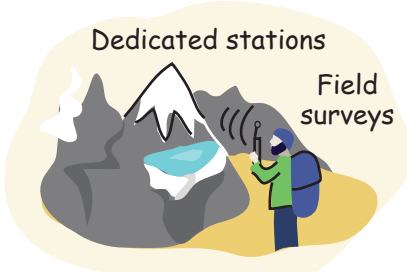


Key stakeholders and actions on risk reduction

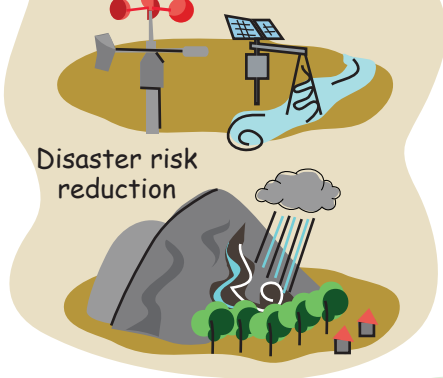
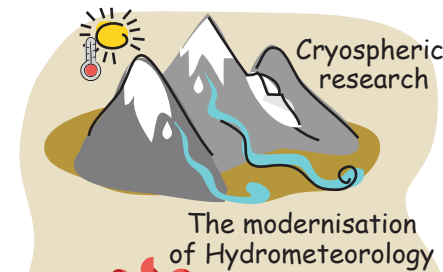
National hydrometeorological
services: monitoring



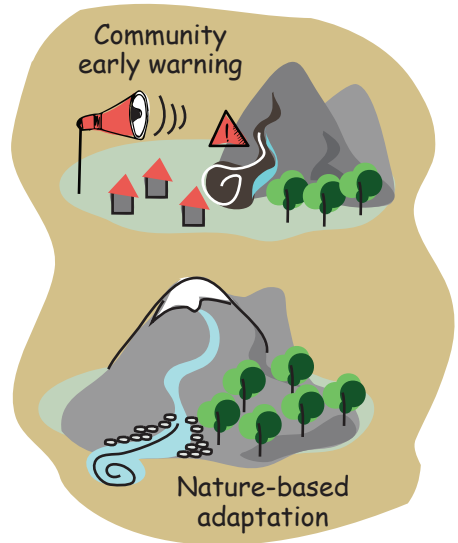
National science and
research institutions



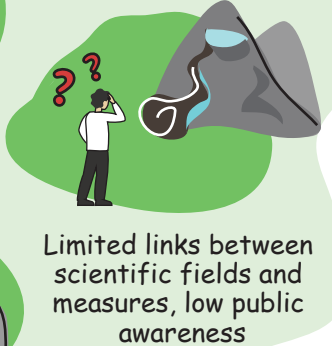
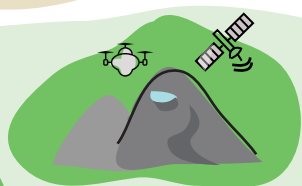
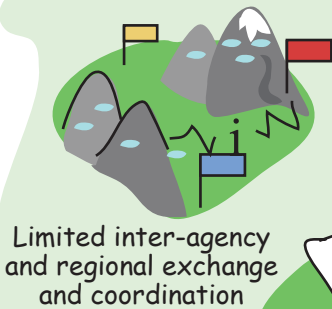
International projects
Local projects



Local projects



Gaps and barriers



Project partners and funders

Participating countries



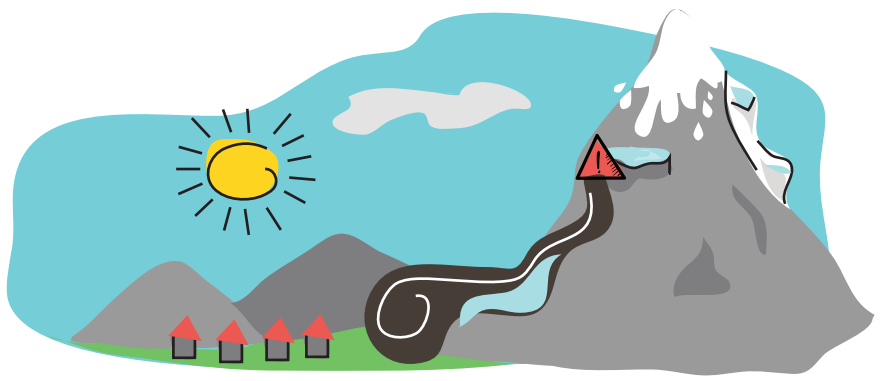
Kazakhstan Kyrgyzstan Tajikistan Uzbekistan



4 countries



Actions at national scale and priority sites



Objective: strengthen adaptation to climate change in Central Asia by reducing risks and vulnerabilities associated with glacial lakes



\$ 6.5 million



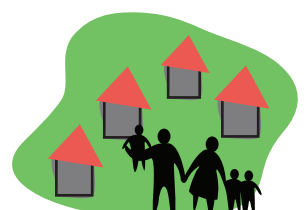
2021-2026



Risk mapping



Early warning



Awareness

Glacial lakes and GLOF risk areas

- Priority sites
- ▲ Glacial lakes and GLOF risk areas



Project partners and funders



Participating countries



Kazakhstan Kyrgyzstan Tajikistan Uzbekistan

1. Strengthening the national and regional capacity to monitor and assess glacial hazards



Hazard and risk assessment



Strategies and approaches to mapping and monitoring



Atlas of glacial lakes



Organizational capacity for mapping and monitoring

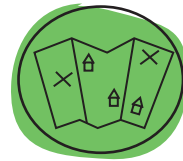
2. Vulnerability assessment, exposure and risk maps



Vulnerability assessment and risk exposure maps



Local risk reduction plans



Consideration of hazard maps in development plans

3. Design and launch of Early Warning Systems (EWS) and risk reduction measures



Evaluation of institutional responsibilities on early warning and disaster risk reduction



Design and implementation plans for site-specific early warning systems

4. Demonstration projects to introduce technologies and best practices on glacier lake early warning systems



Early warning systems in vulnerable communities installation and testing



Structural and nature-based adaptation measures



Training and simulation exercises for the population



Maintenance and financing strategy

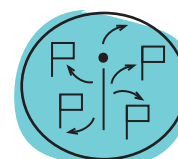
5. Knowledge exchange, stakeholder engagement and communication



A user-friendly web site with risk maps, materials, reports



Education and training programmes



Dissemination of knowledge in Central Asia and beyond

Project partners and funders

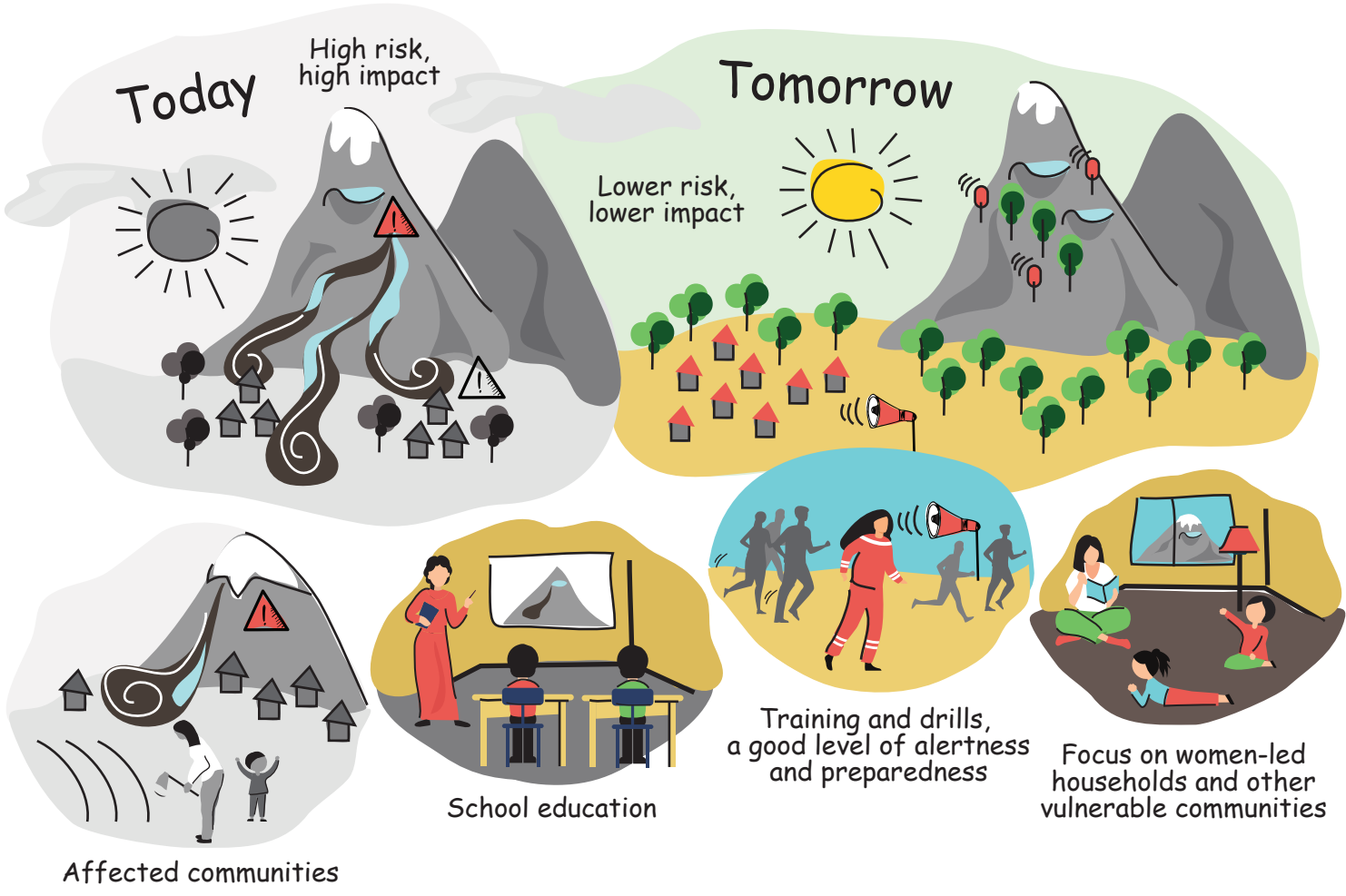


Participating countries



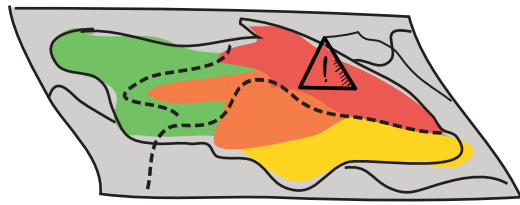
Kazakhstan Kyrgyzstan Tajikistan Uzbekistan

Focus on vulnerable communities. Connecting science and monitoring to villages.



Elements of the Early Warning Systems (EWS) for the Glacier Lake Outburst Floods (GLOFs)

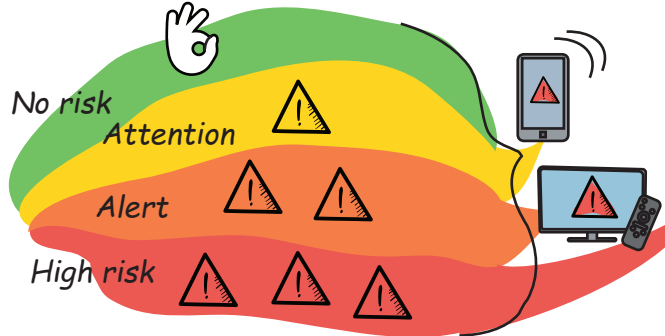
Risk knowledge



Monitoring and warning service



Communication



Response



Project partners and funders



Participating countries



Kazakhstan Kyrgyzstan Tajikistan Uzbekistan